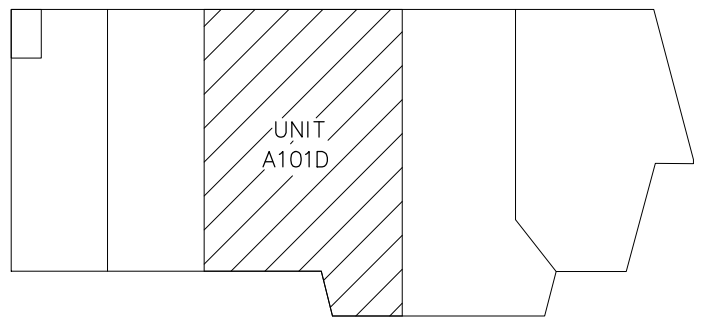
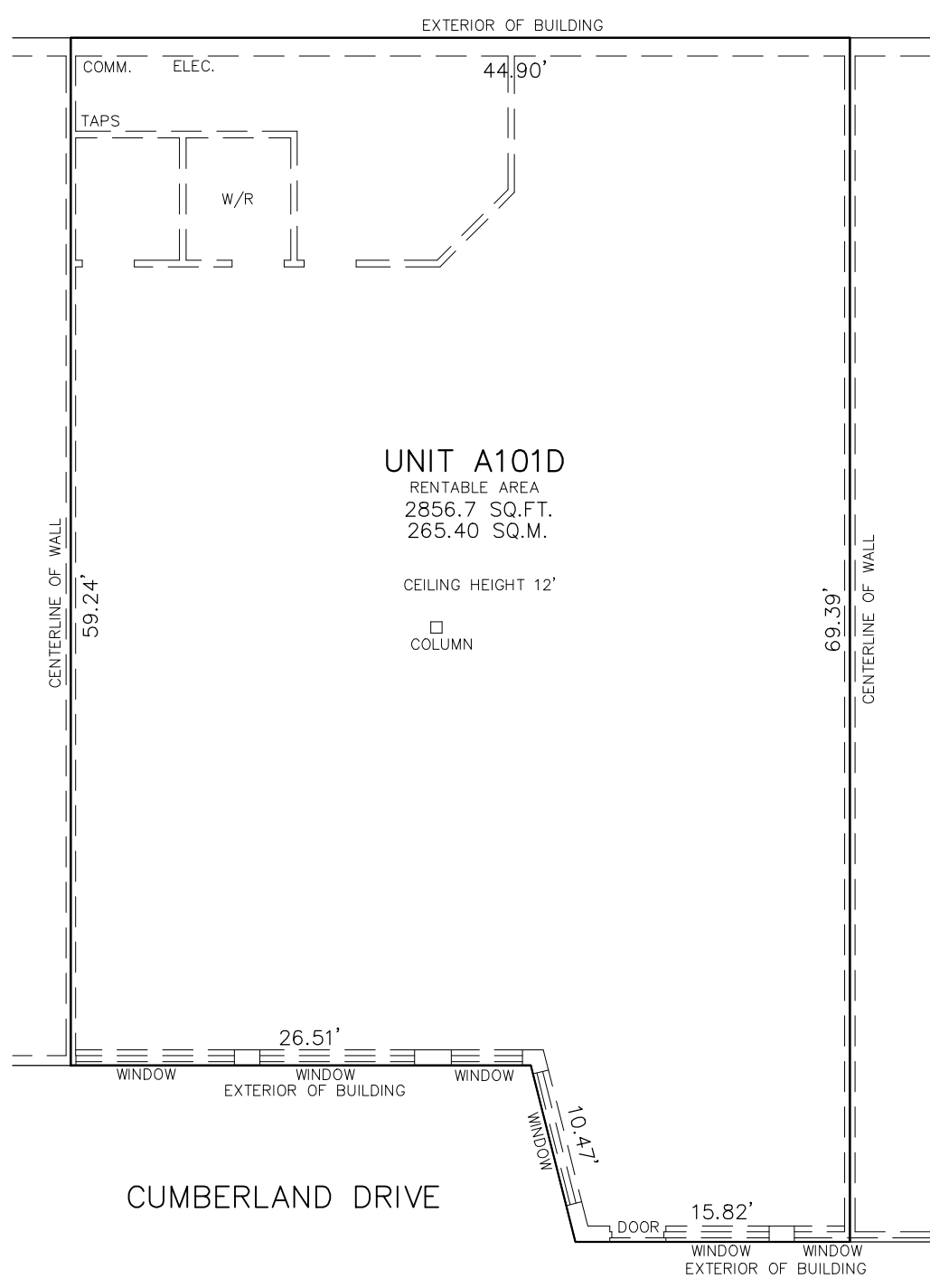

T E N A N T N A M E



KEY PLAN (3 CUMBERLAND DRIVE)



UNIT A101D
RENTABLE AREA
2856.7 SQ.FT.
265.40 SQ.M.

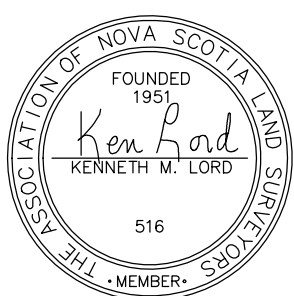
CEILING HEIGHT 12'

□
COLUMN

**3 CUMBERLAND DRIVE
CUMBERLAND PLAZA
DARTMOUTH, NOVA SCOTIA
UNIT A101D**

THOMPSON CONN LIMITED
NOVA SCOTIA LAND SURVEYORS
HALIFAX, NOVA SCOTIA
PHONE: 422-4800
FAX: 454-4700

SCALE: 1" = 10'
DATE: JANUARY 27, 2016
MEASUREMENTS WERE TAKEN ON:
DECEMBER 21, 2015



CERTIFIED CORRECT